



**Oregon State**  
University

**College of Science**

Oregon State University  
128 Kidder Hall  
Corvallis, Oregon 97331

**P** 541-737-2544

science.oregonstate.edu

November 28, 2022

**Charge to the College of Science Strategic Plan Implementation CORE Council**

**Jessica Siegel (Co-Chair)**, Associate Dean for Academic and Student Affairs

**Virginia Weis (Co-Chair)**, Acting Associate Dean for Research and Graduate Studies

**Linda Bruslind**, Senior Instructor II of Microbiology

**Ben Dalziel**, Associate Professor of Integrative Biology

**Matt Graham**, Associate Professor of Physics

**Caroline Hernandez**, Graduate Student in Microbiology

**David Ji**, Professor of Chemistry

**Kameron Kadooka**, Director of Equity, Access & Inclusion

**Phil McFadden**, Associate Professor of Practice, Biochemistry and Biophysics

**Citlali Nieves Lira**, Undergraduate Student of Chemistry

**Clay Petsche**, Associate Professor of Mathematics

**Lan Xue**, Professor of Statistics

**Tze-Yiu Yong** College of Science Project & Events Manager

**Dear College of Science Strategic Plan Implementation CORE Council,**

Thank you all for serving on this Council. Your participation is for AY 2022-2023 with a potential extension for an additional year based on a joint discussion and agreement with the co-Chairs, the individual member and me.

Our college has spent the last two years engaging and deliberating two major plans that will guide us over the next five years. These are our [Diversity Action Plan- Embedding Equity Access & Inclusion](#) and our new [Strategic Plan - Extending the Reach and Impact of Science](#). Your responsibilities on this council are to collaboratively work with the Equity, Access and Inclusion (EAI) Leadership Council and the College of Science Leadership to implement strategic goals, actions and tactics for the college as outlined in the [Strategic Plan](#), and another companion document that outlines priorities and timeline for implementation and specific responsibilities assigned to council members. This includes engaging, collaborating and consulting with faculty, students and staff within all seven departments in the college and internal and external strategic partners to gather feedback to support the plan's implementation.

The [Diversity Action Plan](#) has been integrated into the Strategic Plan to ensure our efforts are effective in advancing the College's [diversity, equity, access and inclusion goals](#). I expect that this committee will be intentional in using shared governance and equitable and inclusive practices with special attention to the [mission, values and vision](#) laid out in our Diversity Action Plan. The EAI Leadership Council, the Gender Equity Committee and the Equity Data Collection Committee will provide partnership to this council in integrating our EAI goals in implementation activities.

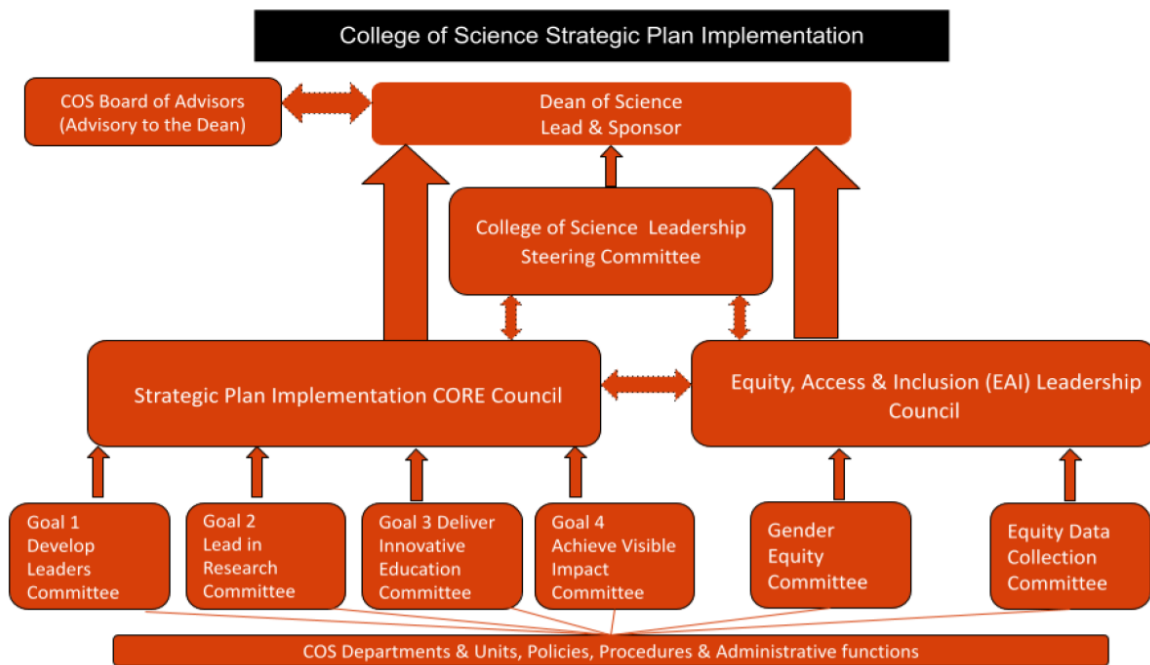
The current implementation structure design (see table below) envisions a CORE implementation council and four committees, one for each Strategic Goal. To help structure and guide this work, the College of Science Leadership will function as the Steering Committee for this implementation. In addition, the seven department heads will serve as champions, providing expert input in helping to align the implementation to Oregon State University’s SP4.0 and upcoming SP5.0 plans, providing support, visibility and promoting the plan within their units. The Dean of Science will be the overall lead and sponsor for the implementation of the college’s strategic plan and will promote the plan both internally to the science and OSU community and externally to our stakeholders, alumni and donors.

Strategic plan implementation is an opportunity to set the direction of the college for the next several years. Thank you all for serving on this important committee. I appreciate your service and dedication to furthering our college’s mission to better serve our entire community.

Sincerely,

*Vrushali A. Bokil*

Vrushali Bokil  
Interim Dean of Science



**Table: Strategic Plan Implementation committee and reporting structure.** Note: the double headed dashed arrows indicate exchange of information, while the strong directed arrows indicate reporting structures.